



## STATISTICAL OBSERVATIONS REGARDING MOUNTAIN TOURIST ROUTES IN ROMANIA

**RUJESCU CIPRIAN\*<sup>1</sup>, MILIN ANDA<sup>1</sup>, FEHER ANDREA<sup>1</sup>, FIRU ADRIAN<sup>1</sup>**

**<sup>1</sup> Banat's University of Agricultural Sciences and Veterinary Medicine "King Michael I of Romania" from Timisoara, Faculty of Management and Rural Tourism**

**Abstract:** Currently in Romania there are over 950 approved mountain trails. This paper presents their statistical distribution according to certain parameters that characterize them. Direct comparisons are made between different geographical regions in order to study the homogeneity of the routes distribution. Certain economic implications that are the result of this distribution are also discussed.

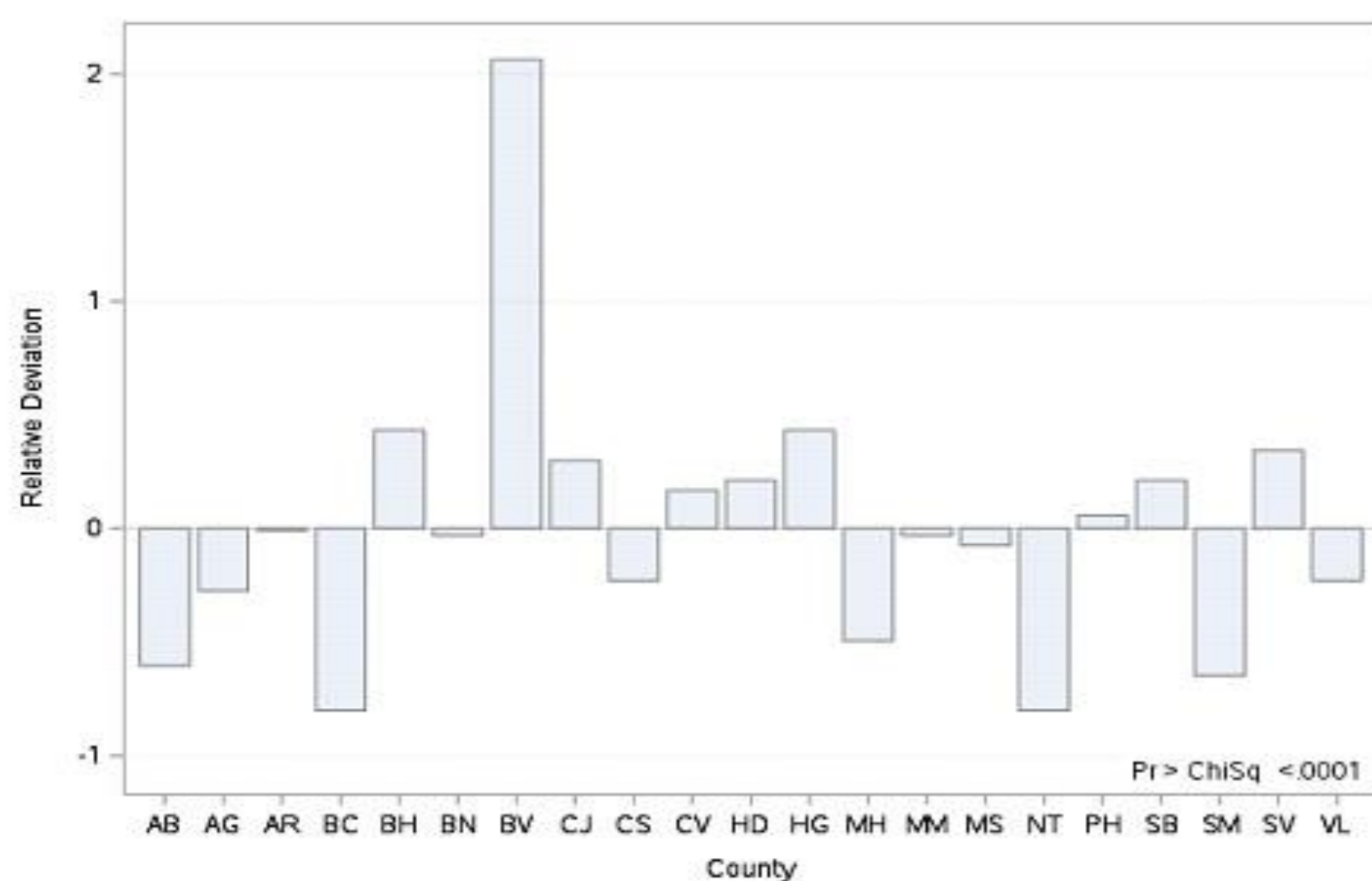
### • Introduction

The aim of the paper is to statistically describe the approved mountain routes in Romania. We refer to the distribution by county in Romania, according to the year in which the route was approved, the travel time, the type of marking and the necessary equipment.

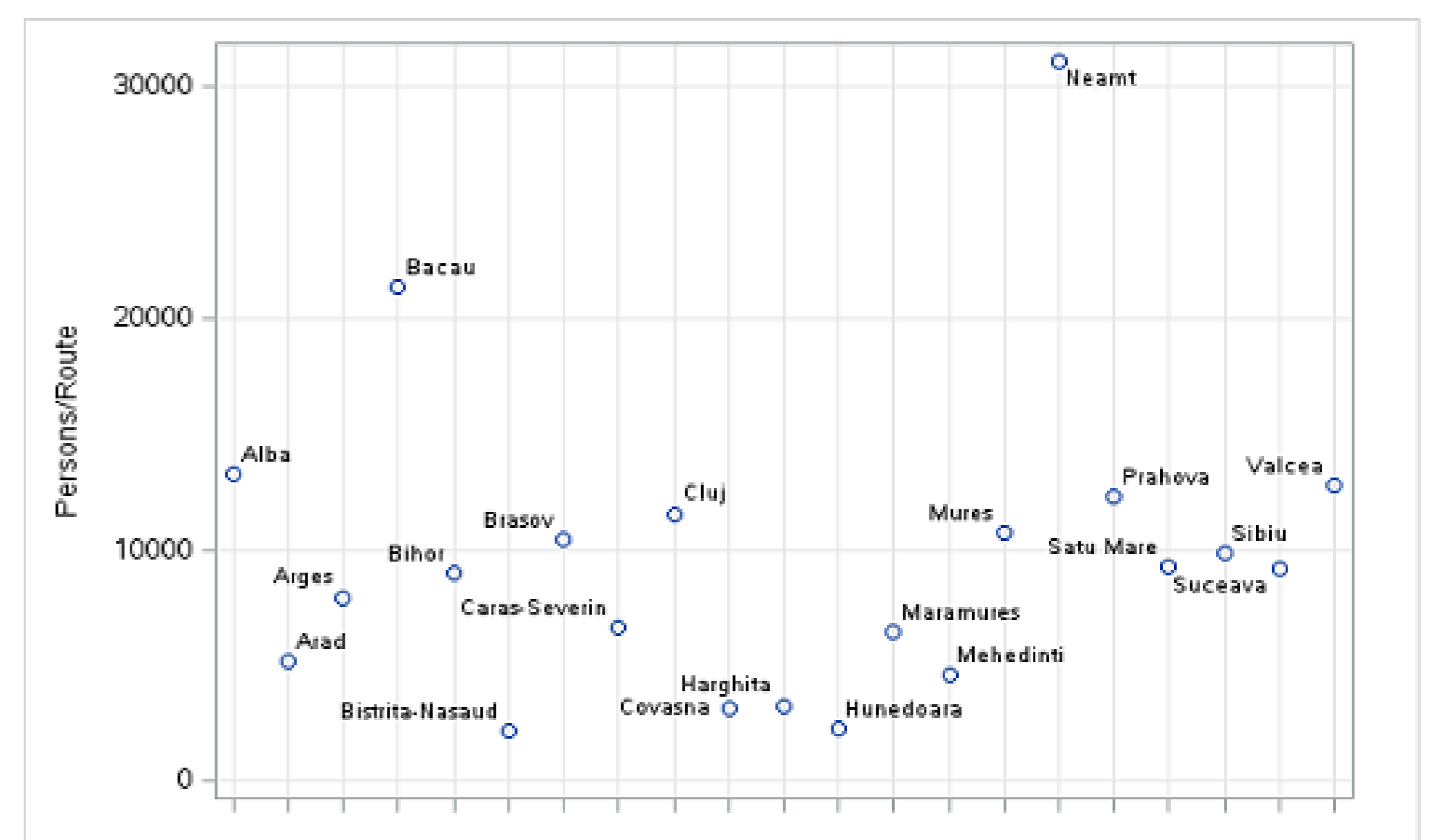
### • Material and method

The statistical data used in the study are those reported by the Romanian Ministry of Entrepreneurship and Tourism in the List of approved mountain tourist routes. The SAS Studio software package was used for statistical processing.

### • Results and discussions



The relative deviation of the number of tourist routes in the counties of Romania



The ratio between the number of people and the number of routes per county

### • Conclusions

In Romania, there are 21 counties where there are approved mountain tourist routes. Half of the number of tourist routes is concentrated in 7 counties: Braşov, Bihor, Harghita, Suceava, Cluj and Sibiu. It was determined that 12 counties have a possible degree of low congestion, under 10,000 tourists for a route, 7 counties an average degree of congestion with 10,000-20,000 tourists for a route and 2 counties a possible high degree of congestion, of over 30,000 tourists for a route.

**Acknowledgement:** In the present study we used the data related to the approved mountain tourist routes reported by the Romanian Ministry of Entrepreneurship and Tourism and the number of tourists per county by National Institute of Statistics.